

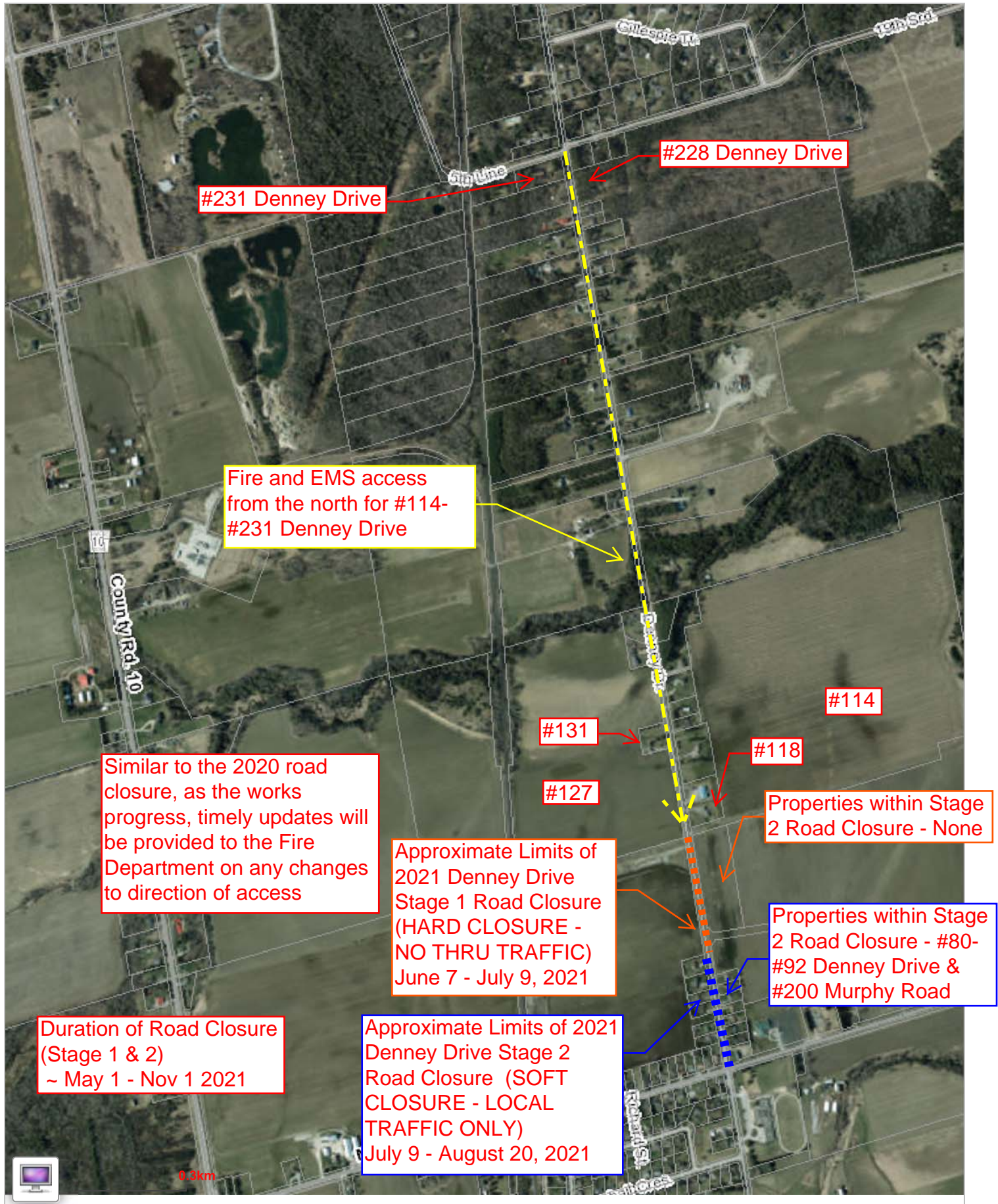
NOTICE OF ROAD CLOSURE

Denney Drive

The Township of Essa hereby advises that Denney Drive will be closed as per the following:

- June 7 – August 27, 2021 - HARD CLOSURE (NO THRU TRAFFIC). This closure will not allow for any traffic or pedestrians to move through the construction zone fronting the stormwater management pond.
- July 9 – September 3, 2021 – SOFT CLOSURE (LOCAL TRAFFIC ONLY). This closure will allow for local traffic through the work area to access their properties.
- Attached is an updated sketch identifying the limits of the upcoming road closure and identified the impacted properties.
- For the duration of the closure, the properties from #114 - #231 Denney Drive will need to be accessed from the north (yellow on attached sketch), and #80 - #92 Denney will need to be accessed from the south (blue on attached sketch).
- As the Stage 2 works within the soft closure progress, the direction of access to the properties will change. We will provide Emergency Services with advance notice in the same manner as last year.

20210525 - Denney Drive Road Closure Details - Fire Department Coordination



#231 Denney Drive

#228 Denney Drive

Fire and EMS access from the north for #114-#231 Denney Drive

#114

#131

#118

Similar to the 2020 road closure, as the works progress, timely updates will be provided to the Fire Department on any changes to direction of access

Properties within Stage 2 Road Closure - None

#127

Approximate Limits of 2021 Denney Drive Stage 1 Road Closure (HARD CLOSURE - NO THRU TRAFFIC) June 7 - July 9, 2021

Properties within Stage 2 Road Closure - #80-#92 Denney Drive & #200 Murphy Road

Duration of Road Closure (Stage 1 & 2) ~ May 1 - Nov 1 2021

Approximate Limits of 2021 Denney Drive Stage 2 Road Closure (SOFT CLOSURE - LOCAL TRAFFIC ONLY) July 9 - August 20, 2021